


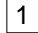
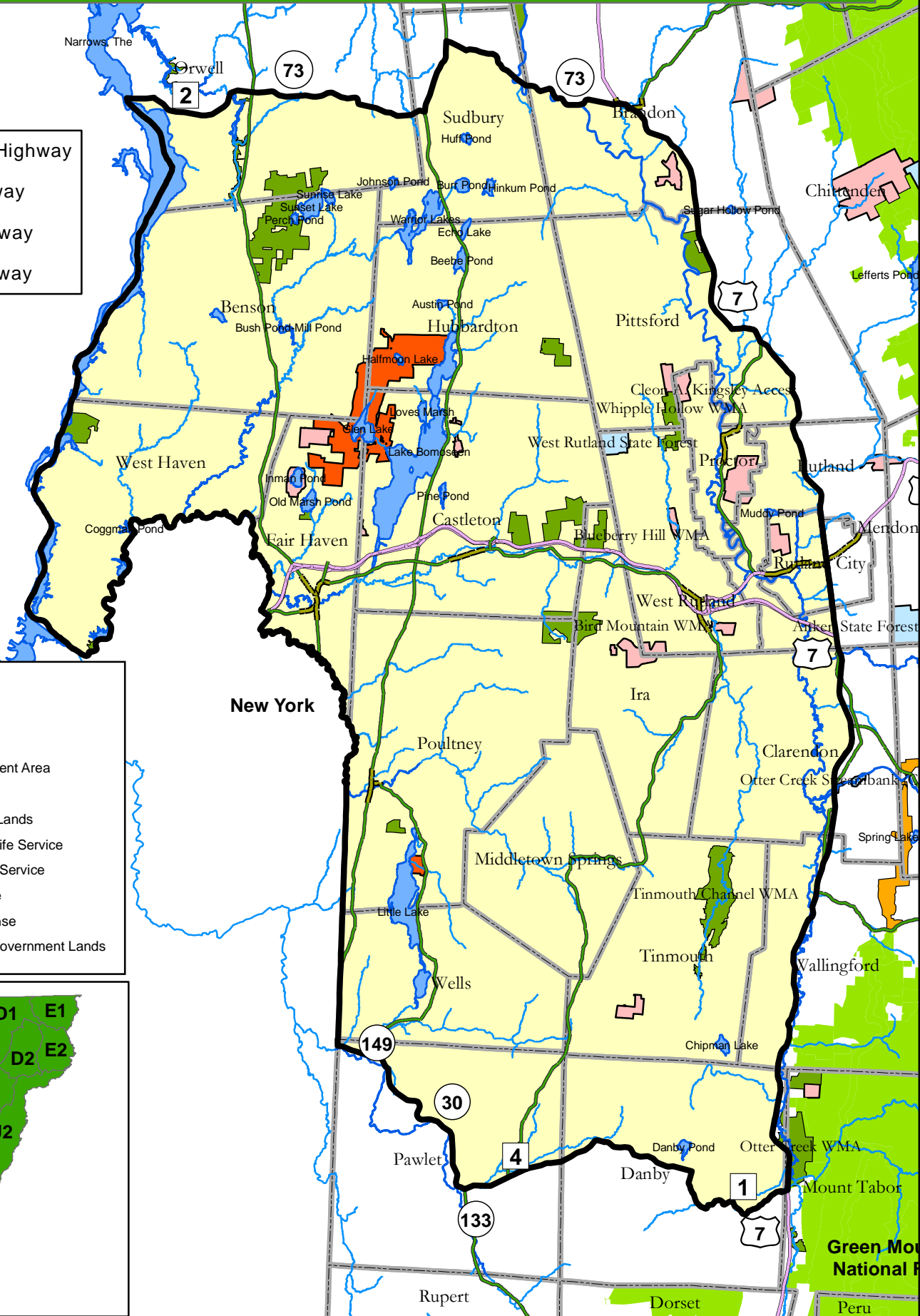
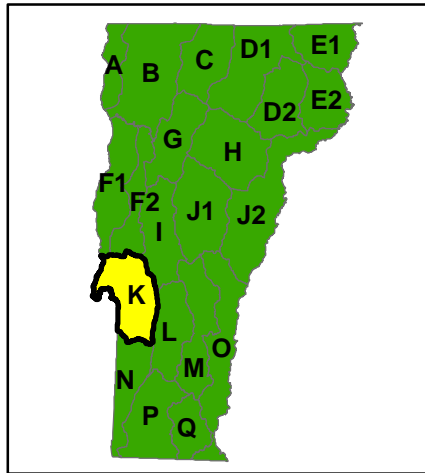


WILDLIFE MANAGEMENT UNIT K

-  Interstate Highway
-  U.S. Highway
-  State Highway
-  Town Highway

- State Land**
-  State Forest
 -  State Park
 -  Wildlife Management Area
- Conserved Lands**
-  Conserved Town Lands
 -  US Fish and Wildlife Service
 -  US National Park Service
 -  US Forest Service
 -  US Dept. of Defense
 -  Conserved Non Government Lands



Boundaries of conserved lands are approximate. This map and the information on it should be used for planning purposes only.